

ROUTINE

MOVIE FX 101

Cinema Surround



USER MANUAL

SAFETY REGULATIONS

Please read this manual carefully and in its entirety. It contains important information regarding safety issues, including guidelines for general safe use of rigging systems as well as advisories on government regulations and liability laws. The suspension of large, heavy objects in public places is subject

to numerous laws and regulations at the national/federal, state/provincial, and local levels. The user must assume the responsibility for making sure that the use of any rigging system and its components in any particular circumstance or venue conform to all applicable laws and regulations in force at the time.


GENERAL SAFETY RULES

- Carefully read this manual in all its parts
- Respect the working load limits and maximum configurations of the elements and of any third-party component (such as suspension points, motors, rigging accessories, etc...)
- Do not incorporate any accessory not provided by Outline; all damaged or defective components must be replaced only by equivalent parts approved by Outline
- Ensure personnel health and safety, ensure that no one is standing below the system during the installation, ensure that all personnel involved in the installation are equipped with personal safety devices
- Always double check that the elements are correctly connected before suspending the system.

The rigging elements are easy to use, however the installation shall be carried out only by qualified personnel that are familiar with the rigging techniques, safety recommendations and with the instructions described in this manual.

All mechanical components are subject to wear and tear over prolonged use as well as corrosive agents, impacts or inappropriate use. For this reasons users have the responsibility to adopt and adhere to a schedule of inspections and maintenance. Key components (screws, connecting pins, welded points, rigging bars) must be inspected before every use. Outline strongly recommends to carefully inspect the system components at least once a year, reporting in a written document the date, the name of the inspector, the points checked and any anomalies discovered.

DISPOSAL OF WASTE MATERIALS

 Your product is designed and manufactured with high quality material and components, which can be recycled and reused. When this crossed-out wheeled bin symbol is attached to a product, it means the product is covered by the European Directive 2002/96/EC and subsequent amendments. This means that the product must NOT be disposed with other waste. It is the user's

responsibility to dispose of their electrical and electronic equipment by handing it over to an approved re-processor. For more information about where you can send your equipment for recycling, please contact your local distributor. The correct disposal of your old product will help prevent potential negative consequences for the environment and human health.

CONFORMITY AND WARRANTY

CE All the Outline electro-acoustic and electronic devices are in accordance with objects stated by CEE/EU directives.

The CE declaration of conformity and the warranty are printed on a document that is shipped with the product.

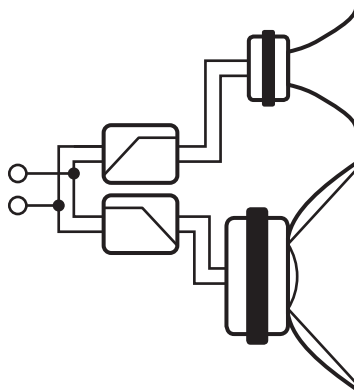
AMPLIFIER CONNECTION

Movie FX 101 mounts a mid-woofer in a bass-reflex configuration and a compression driver loaded on a horn. It finds its best application as a powerful surround speaker for cinemas of all dimensions.

Movie FX 101 is fitted with a cross-over and requires

just one amplifier channel.

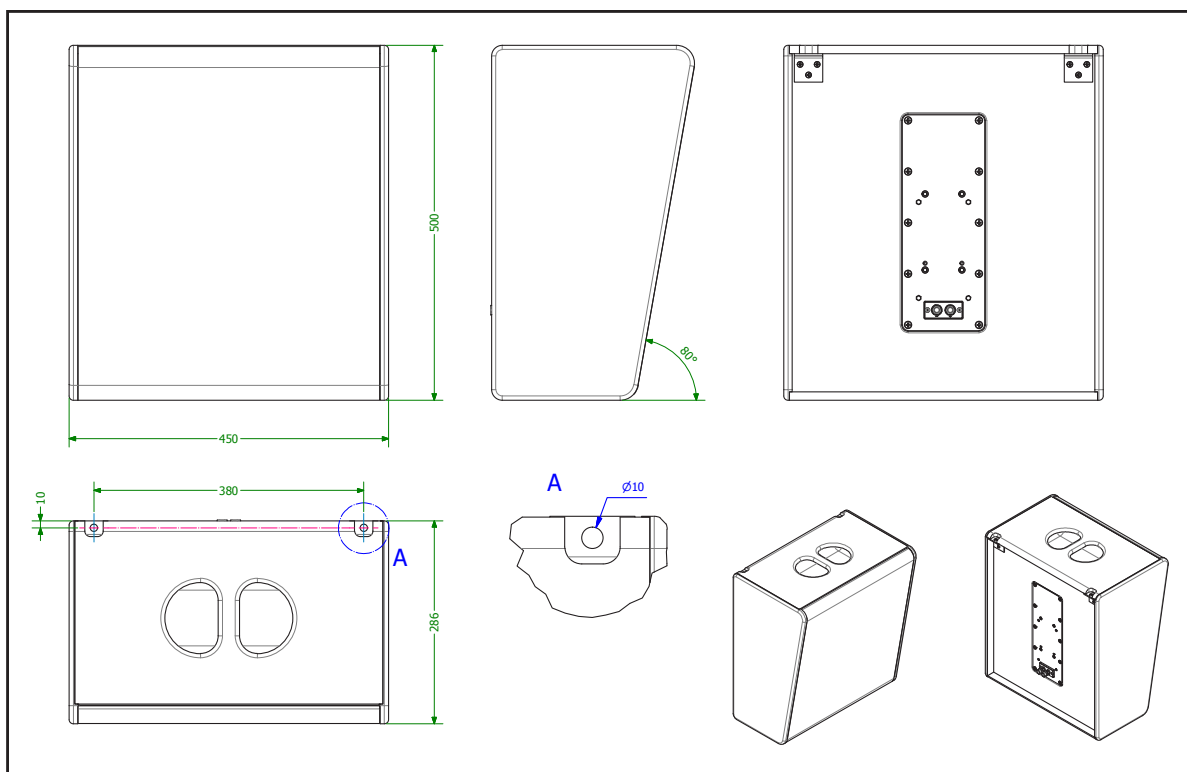
The system needs adequate amplification and external processing to protect the components from high input signals and low frequencies and to achieve the best performance.



MOUNTING INSTRUCTIONS

This system can be safely mounted using the on-board rigging points: two 10 mm holes on the L-shape brackets on its top rear edge. The distance

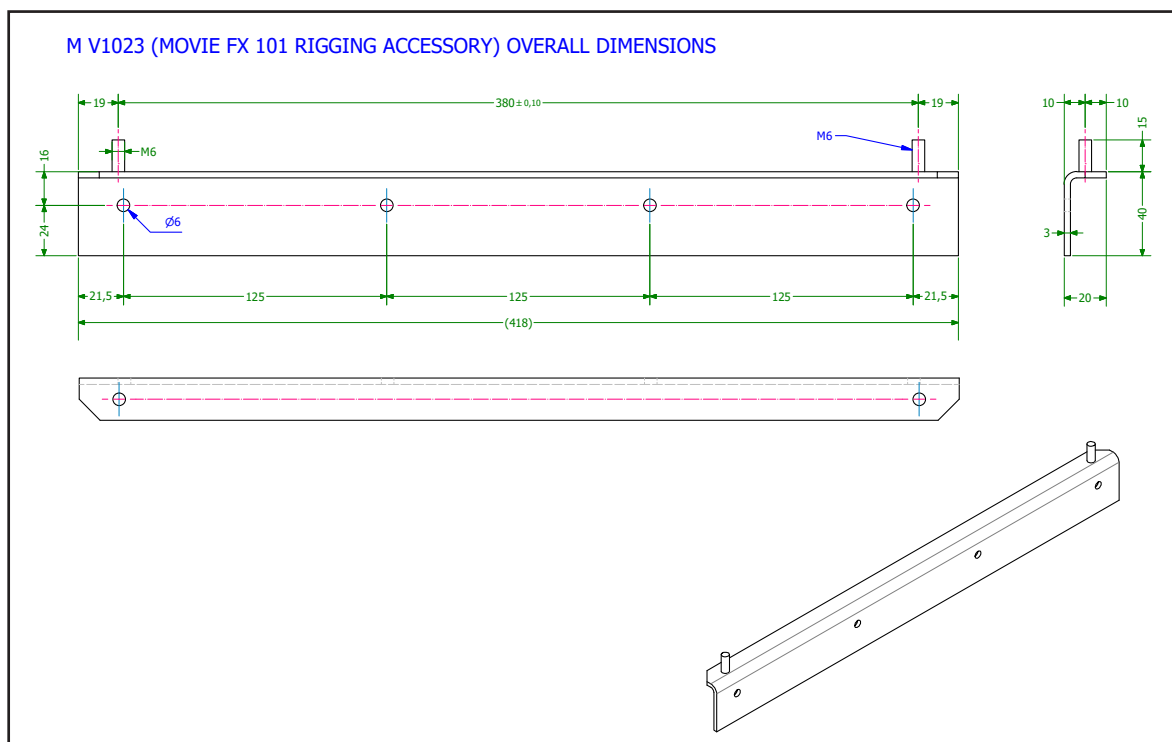
between the two rigging points is 380 mm. The loudspeaker is provided with M V1023 accessory to facilitate the rigging.



APPENDIX: RIGGING ACCESSORY CORRECT USE

Movie FX 101 is provided with an accessory intended to facilitate the rigging. This accessory shall not be used with any other loudspeaker and with any other device. This accessory is intended to safely support the load of one Movie FX 101, any other use (including suspending more speakers or adding more load by placing weight on the loudspeaker) is absolutely forbidden.

This accessory must be mounted to a wall using the 6 mm holes and proper fasteners. Movie FX 101 must then be attached to the two male threaded M6 points corresponding to the two rigging points on the loudspeaker. M6 nuts shall be used to prevent any unwanted speaker movement. As an additional safety measure it is possible to use toothed washers or split washers to prevent any unwanted unscrewing.



Outline carries out on-going research for product improvement. New materials, manufacturing methods and design upgrades are introduced to existing products without prior notice as a routine result of this philosophy. For this reason, any current Outline product may differ in some aspect from its description, but will always equal or exceed the original design specifications unless otherwise stated.